

# How our observations and feedback are used at Canopy Forest School?



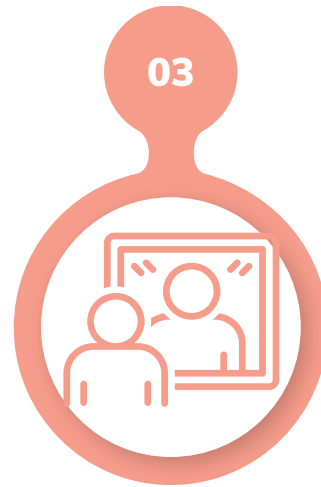
## Getting to know students as individuals

Forming a holistic profile  
Knowing fascinations,  
learning styles and play  
types



## Student Reflection

Influencing the direction of the learning  
Ownership of the learning process  
Reflecting on own learning journey and  
deeper understanding of ourselves



## Ethos, values and mission

They are a tool for assessing  
whether we are fulfilling our  
ethos, mission and values and  
whether we did to adjust and  
review our practice.



## Planning and Next Learning steps

Informed Planning  
Plan, do, review process  
Knowing proximal zone of  
development and where  
support and scaffolding is  
needed

## Helps build a community

Bonding and forming our own  
identity as a group.  
Supporting, listening and  
helping each other.  
Building a healthy learning  
space